

5% DEPOSIT
BALANCE
UPON
COMPLETION



\$604,000

Kaya 16

Lot 7011 Lodge Way,
Werribee

Façade	Haze
House size	16 SQ
Land size	311 m ²
Land dimensions	15 m x 21 m

4 2 2

- 5% Deposit, balance upon completion
- Fixed Site Costs
- Smeg Appliances
- Cooling Included

This package includes:

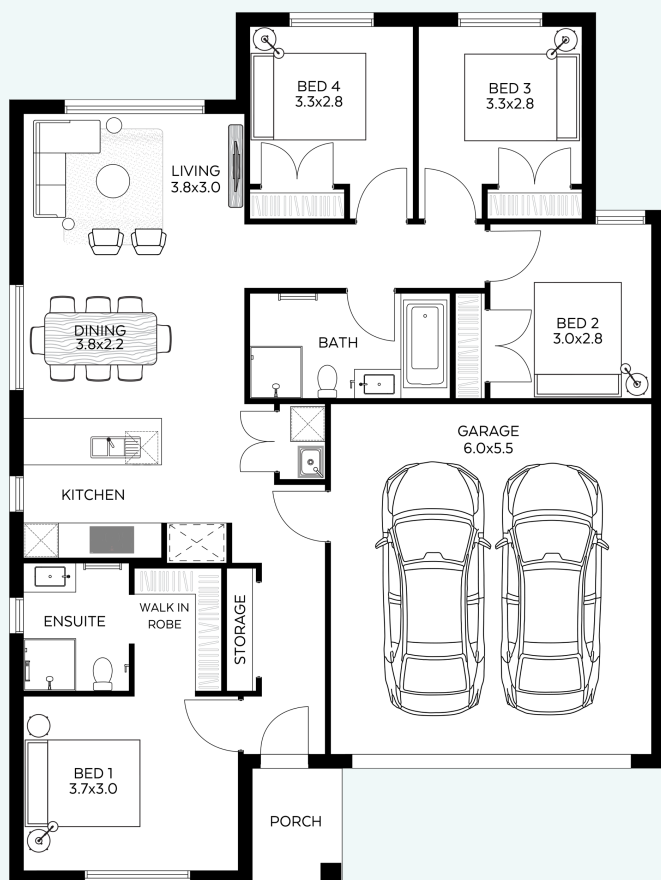
- FIXED site costs
- 2590mm ceilings
- Flyscreens to windows
- Single wall hung split system to living
- 40mm waterfall stone edge to island bench
- 20mm stone to vanities
- Premium carpet & laminate flooring
- Stainless steel trough & cabinet to laundry
- Tile splashback to kitchen
- Smeg 60cm classic thermoseal oven
- Smeg 60cm ceramic cooktop in black
- Smeg 60cm undermount rangehood
- Smeg stainless steel dishwasher
- Rinnai continuous flow HWS
- 1500mm acrylic bathtub with tiled hob
- 75mm cove cornices
- MK3 1 & ¾ sink bowl
- TV antenna
- Colorbond garage door
- Tiled roof
- Haze facade as standard

Contact our New Home Expert

Alex Szetchtman
alex.szetchtman@arli.com.au
0467 593 210

0467 593 210

arlihomes.com.au



Package price is correct at time of printing and subject to change without notice. Price is based on floor plan and inclusions listed. Please note the above standard inclusions/specifications are subject to change without notice and Arli Homes reserves the right to substitute items with an equivalent product at any time. The façade shown is for illustrative purposes only. Advertised sizes may vary to the actual home and the design may vary subject to the land and siting requirements. Always check your working drawings for final sizes to be constructed. Package price excludes stamp duty on land, legal fees, and conveyancing costs including titles and property report. For a full list of inclusions and exclusions, please contact an Arli New Home Expert. Package is subject to final quoting of a New Home Estimate provided. Land is supplied by the developer. Land prices and availability are subject to change without notice. All house and land packages are subject to developer approval. For more information visit arlihomes.com.au. ©2023 Arli Homes Bass Haus Pty Ltd trading as Arli Homes ABN:23633729316 C-DBU 64772